

spectra

surface collection



Simpolo®

Tiles & Bathware

index spectra™

colours 03 / decors 11 / sizes & surfaces 16
locations 18 / technical 52

spectra concept

taste the essence of colours

A collection of premium matt surfaces celebrating the essential taste of colours inspired by the infinite sensory nuances of food and spices.

Elements to be savored in their purity or proposing endless combinations of style, also drawing on the style vivacity of refined decorations. To dress the spaces with an intense and original taste.



pepper



wine



chilli



berry



herbs



mustard



tango



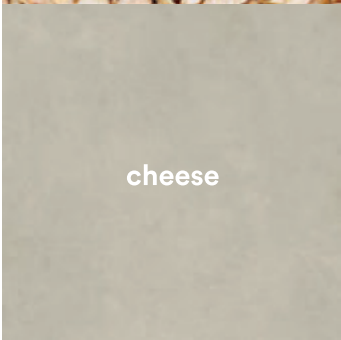
cumin



peanut



mushroom



cheese



salt

spectra soft

berry

herbs

Soft and vibrant shades.
A palette designed to
create ever-new chromatic
dialogues, at the service of an
eclectic and trendy designs.

wine

pepper



spectra bright

A palette of warm and bright colors. To compose symphonies of highly personalized tones, and convey to the spaces an enveloping feeling of well-being.

chilli

peanut

tango

mustard



spectra sandy

From the different expressions of the earth, the inspiration for a mix of neutral colours with a fascinating material appeal. Dusty and essential tones, to create design scenarios with refined aesthetic value.

cheese

cumin

salt

mushroom



fence texture

The image of a fence with suggestive openings suggests a refined texture capturing the idea of freedom in a design element at the service of creative planning, looking out on new horizons.

size
598×1198 mm
SCS Matt

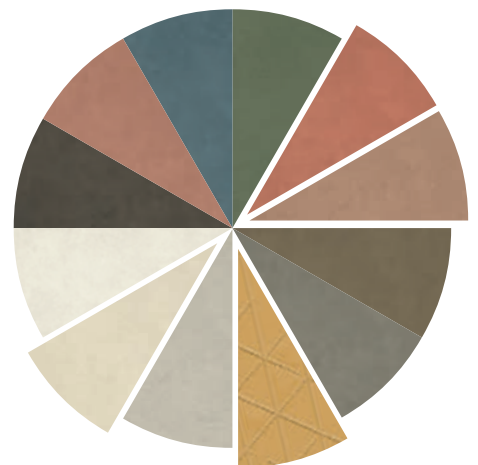
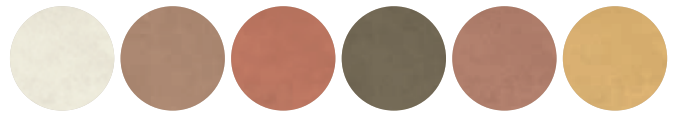
thickness
8,5 mm







Fence Texture is available in 6 colours:
Peanut, Tango, Chilli, Cumin, Wine, and Mustard



floor- Tango 598x1198 mm SCS Matt
wall- Mustard Fence 598x1198 mm SCS Matt
Chili 598x1198 mm SCS Matt
Peanut 598x1198 mm SCS Matt

mount texture

The iconic profile of mountains inspires a texture that expresses an appealing material three-dimensionality, ensuring the personalization of spaces with a rhythmic and symmetrical movement.

size
598×1198 mm
SCS Matt

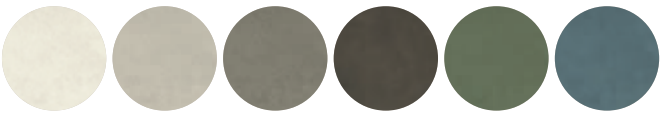
thickness
8,5 mm







Mount Texture is available in 6 colours:
Salt, Cheese, Mushroom, Pepper, Herbs, and Berry



floor- Mushroom 598x1198 mm SCS Matt
wall- Cheese Mount 598x1198 mm SCS Matt
Cheese 598x1198 mm SCS Matt
Herbs 598x1198 mm SCS Matt

Folk Carpet decors

18

Decorations that actualize popular motifs with great charm.
Graphic and chromatic designs pulsate with new stylistic energy,
increasing the possibilities of customization of projects.

size
198x198 mm
SCS Matt

thickness
8,5 mm



Messa & Motif decors

20

Patterns with an evocative, historical flavor revive in decorations that revive their expressive power. Proposals enrich the combinatorial potential of the collection, perfect to give each space its right emotional nuance.

size

198x198 mm

SCS Matt

thickness

8,5 mm



spectra bricks

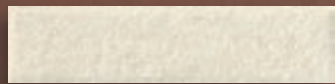
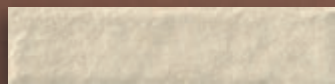
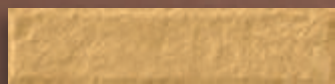
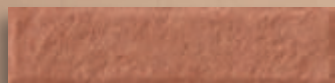
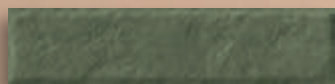
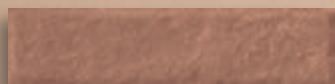
22

An element of timeless versatility, back in fashion with new trendy decorative variants. Elements that broaden design horizons, lend themselves to the creation of fascinating compositions with multiple surfaces.

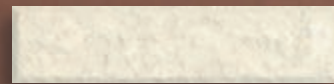
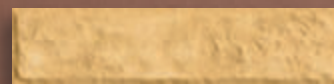
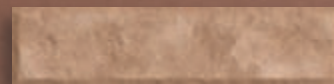
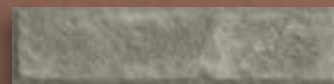
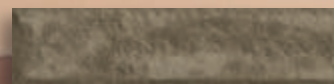
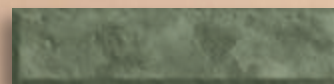
size
58×250 mm
SCS Matt
and Glossy

thickness
8,5 mm

SCS Matt


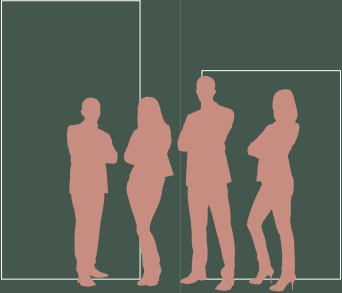







Glossy



sizes, surfaces & thickness

24

						
1200×2780 mm SCS Matt	1198×2398 mm SCS Matt	1198×1798 mm SCS Matt	1198×1198 mm SCS Matt	598×1198 mm SCS Matt	198×198 mm SCS Matt	58×250 mm SCS Matt and Glossy
Thickness 6 mm	Thickness 9 mm	Thickness 9 mm	Thickness 9 mm	Thickness 8,5 mm	Thickness 8,5 mm	Thickness 8,5 mm



spectra for shops & boutiques

26

A collection with a highly versatile soul, open to endless combinations of colours, and materials inspirations, also thanks to the availability of multiple size formats. The ideal choice to dress commercial spaces with a highly original sartorial design.



floor- Cheese 1198x1198 mm SCS Matt
wall- Cheese 58x250 mm SCS Matt
Wine 1198x2398 mm SCS Matt
Wine 58x250 mm SCS Matt
Mushroom 1200x2780 mm SCS Matt



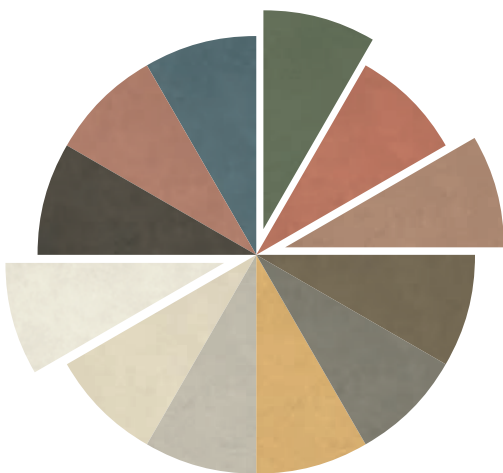




spectra for bathrooms & vanity

30

Even in bathrooms and in other environments characterized by the presence of water and humidity, the excellent technical performance of vitrified ceramics allows you to create eye-catching chromatic and stylistic compositions.



floor- Herbs 1198x1198 mm SCS Matt
wall- Herbs 1198x1198 mm SCS Matt
Folk Origin 198x198 mm SCS Matt
Herbs Brick 58x250 mm Glossy
Tango 1200x2780 mm SCS Matt







spectra for kitchen & hospitality

34

Spectra allows free expression to your visions, giving shape and substance to projects finished down to the smallest details, also creating other furniture elements with exclusive aesthetic value.



floor - Cheese 198x198 mm SCS Matt
Cheese 1198x1198 mm SCS Matt
Folk Origin 198x198 mm SCS Matt
wall- Cheese 1200x2780 mm SCS Matt
Berry 1200x2780 mm SCS Matt
Berry Brick 58x250 mm Glossy
Motif Berry 198x198 mm SCS Matt







spectra for living & leisure

38

The expressive force of colours is reflected in surfaces dressing the spaces with an essential and at the same time lively elegance, embellished by the possibility of matching with precious decorations.



floor- Berry 1198x1198 mm SCS Matt
Berry 198x198 mm SCS Matt
Folk Diamond 198x198 mm SCS Matt
wall- Berry 1200x2780 mm SCS Matt
Salt 1200x2780 mm SCS Matt
Salt 1198x1198 mm SCS Matt
Messa Salt 198x198 mm SCS Matt
Cumin Brick 58x250 mm SCS Matt







spectra for studio & offices

42

Even in the workplace, it is possible to create projects with a perfect balance between design sensitivity and technical efficiency.
Harmonies between shapes, colours, and textures infuse a dynamic and trendy character to the settings.



floor- Peanut 198x198 mm SCS Matt
Mushroom 598x1198 mm SCS Matt
wall- Mustard 1200x2780 mm SCS Matt
Mustard 598x1198 mm SCS Matt
Mushroom 598x1198 mm SCS Matt



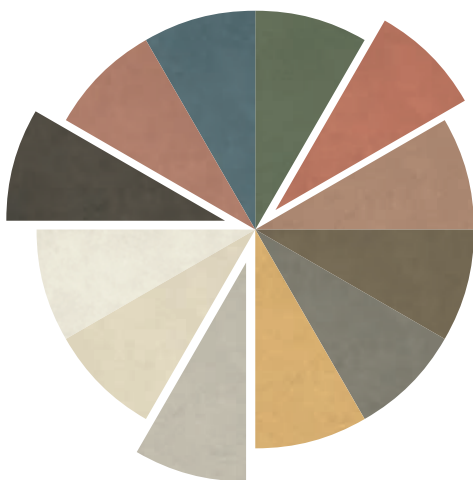




spectra for cafes & bars

46

A proposal designed and developed to create atmospheres with a great immersive impact.
Places in which to absorb the energy of colours, and their fascinating combinations,
enjoying pleasant vibrations of comfort.



floor- Cheese 1198x1198 mm SCS Matt
wall- Chilli 1200x2780 mm SCS Matt
Pepper Brick 58x250 mm Glossy
Motif Chili 198x198 mm SCS Matt







Colours

1200×2780 mm SCS Matt / Thickness 6 mm - 1198×2398 mm SCS Matt / Thickness 9 mm
1198×1798 mm SCS Matt / Thickness 9 mm - 1198×1198 mm SCS Matt / Thickness 9 mm
598×1198 mm SCS Matt / Thickness 8,5 mm - 198×198 mm / Thickness 8,5 mm





tango

cumin

mushroom

cheese

peanut

salt

Diamonds

198×198 mm SCS Matt / Thickness 8,5 mm

Folk Diamond



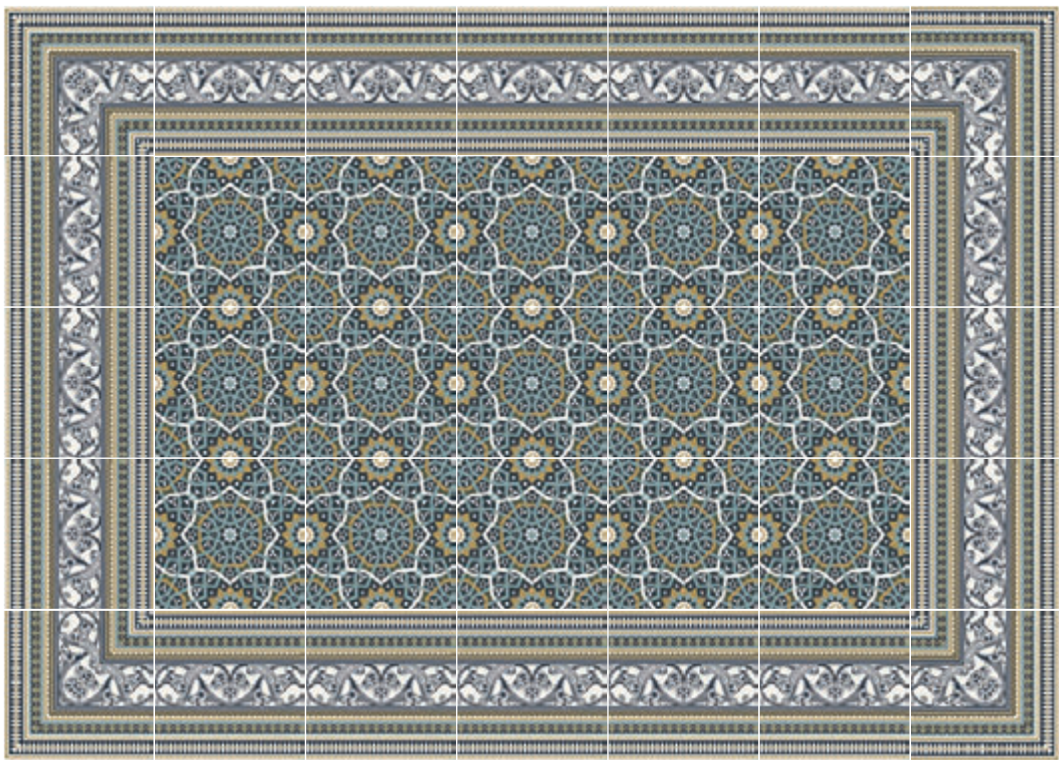
Corner



Border



Base



Combination options



Salt



Peanut



Cumin



Berry

SCAN for
VIRTUAL



Origin

198x198 mm SCS Matt / Thickness 8,5 mm

Folk Origin



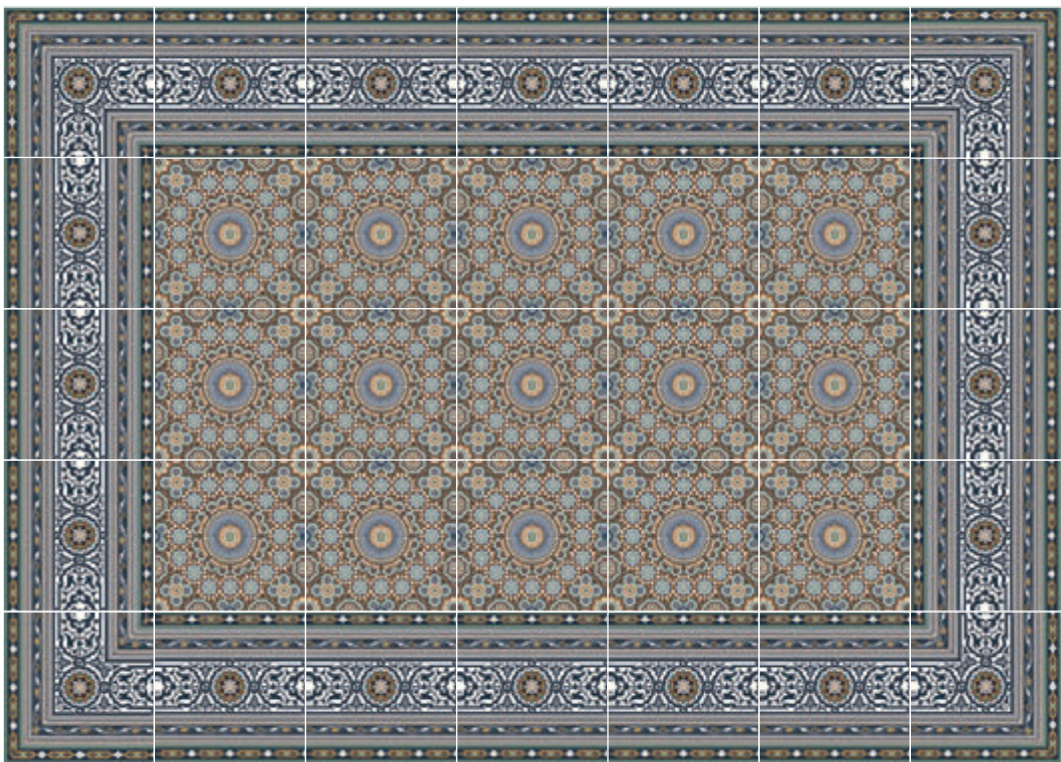
Corner



Border



Base



53

Combination options



Salt



Tango



Herbs



Berry

SCAN for
VIRTUAL



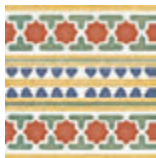
Stars

198×198 mm SCS Matt / Thickness 8,5 mm

Folk Stars



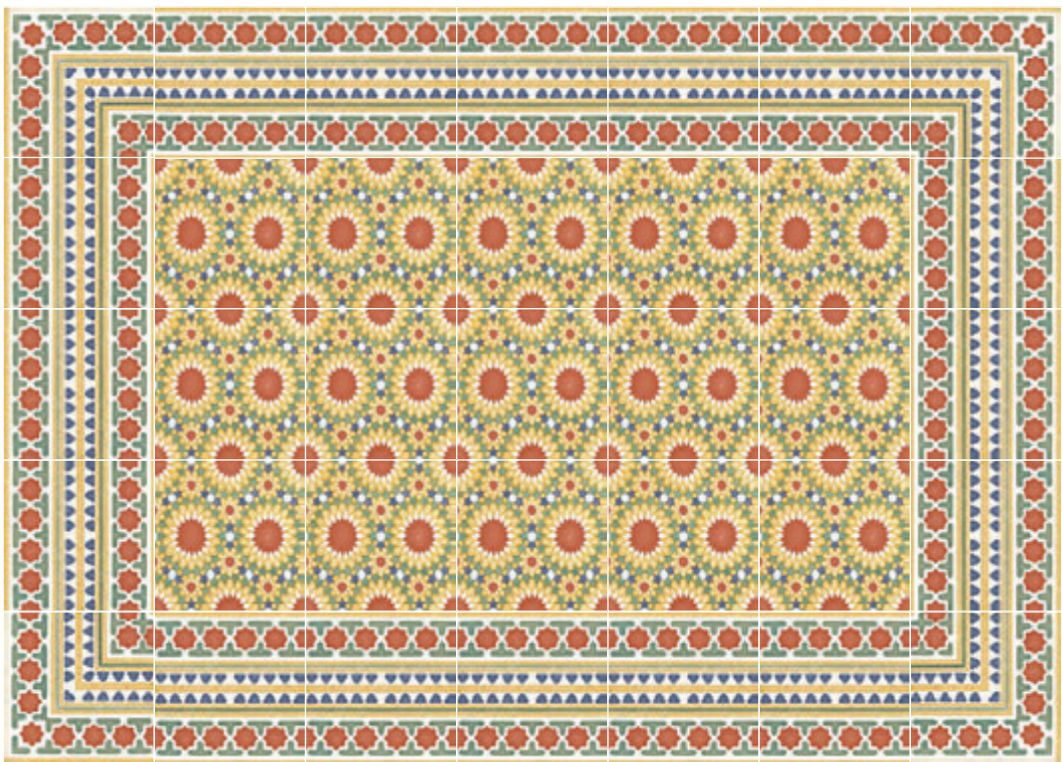
Corner



Border



Base



Combination options



Salt



Mustard



Chilli



Herbs

SCAN for
VIRTUAL



Messa

198×198 mm SCS Matt / Thickness 8,5 mm

Messa Peanut



Combinations option



Peanut Cumin Mustard

Messa Cheese



Combinations option



Salt Cheese Berry

Messa Salt



Combination options



Salt Mushroom Wine

SCAN for
VIRTUAL



Motif

198×198 mm SCS Matt / Thickness 8,5 mm

Motif Berry



Motif Herbs



Combination options



Mushroom Berry

Combination options



Mushroom Herbs

Motif Chilli



Motif Mustard



Combination options



Mushroom Chilli

Combination options



Mushroom Mustard

Motif Pepper



Combination options



Mushroom Pepper

Motif Tango



Combination options



Mushroom Tango

Motif Wine



Combination options



Mushroom Wine

SCAN for
VIRTUAL



Bricks matt

58x250 mm SCS Matt / Thickness 8,5 mm



Salt



Peanut



Cumin



Pepper



Cheese



Mustard



Tango



Chilli



Mushroom



Berry



Herbs



Wine



Technical

sizes **1200×2780 mm - 1198×2398 mm - 1198×1798 mm - 1198×1198 mm - 598×1198 mm**

CHARACTERISTIC	STANDARD AS PER ISO13006:2008 / EN14411 Gr.Bla	STANDARD AS PER ISO15622:2017 Gr.Bla	METHOD OF TESTING	SIMPOLO MEAN VALUE
Regulatory Properties Rectified Sizes				
Deviation in Length and Width	±0.30 % (± 1.00 mm)	±0.10%	ISO 10545-2/IS 13630-1	±0.10%
Deviation in Thickness	±5.0 % (± 0.50 mm)	±5.0%	ISO 10545-2/IS 13630-1	±4.0%
Straightness in Side	±0.30 % (± 0.80 mm)	±0.10%	ISO 10545-2/IS 13630-1	±0.10%
Rectangularity	±0.30 % (± 1.50 mm)	±0.10%	ISO 10545-2/IS 13630-1	±0.10%
Surface Flatness Centrai Curvature	±0.40 % (± 1.80 mm)	±0.50%	ISO 10545-2/IS 13630-1	±0.20%
Surface Flatness Edge Curvature	±0.40 % (± 1.80 mm)	±0.50%	ISO 10545-2/IS 13630-1	±0.20%
Surface Flatness Warpage	±0.40 % (± 1.80 mm)	±0.50%	ISO 10545-2/IS 13630-1	±0.10%
Surface Quality	>9 5% defects free	>9 5% defects free	ISO 10545-2/IS 13630-1	>95% defects free
Small Color Difference (For Plain Colour).	ΔE< 1.00	N.A.	ISO 10545-16	ΔE< 0.80
Structural Properties				
Water Absorption	≤0,50%	≤0,080%	ISO 10545-3/IS 13630-2 :	≤0.080%
Bulk Density	As per Manufacturer	Min 2.20 g/cc	ISO 10545-3/IS 13630-2	> 2.28 gm/cc
Massive Mechanical Propertles				
Modulus of Rupture	Min. 35.0 N/mm²	Min. 35.0 N/mm²	ISO 10545-4/IS 13630-6	Min. 37.0 N/mm²
Breaking Strength Thickness ≤7.5 mm	Min 1300.0 N	Min 1300.0 N	ISO 10545-4/IS 13630-6	Min 1500.0 N
Breaking Strength Thickness ≤7.5 mm	Min 700.0 N	Min 700.0 N	ISO 10545-4/IS 13630-6	Min 1000.0 N
Surface Mechanical Properties				
MOH'S Hardness *	As per Manufacturer	Min.5	BS EN 15771 /IS 13630-13	Min 5
Surface Abrasion Resistance *	As per Manufacturer	Min. Class II	ISO 10545-7/I S 13630-11	Min Class II
Thermal Hygrometric Properties				
Moisture Expansion	Max 0.06% (0.6 mm/m)	Max 0.02 mm/m	ISO 10545-10 /IS 13 630-3	Max 0.02 mm/m
Thermal Expansion(COE) at 100°C	As per Manufacturer	Max. 6.0 x 10-6	ISO 10545-8/IS 13630-4	Max. 6.0 x 10-6
Thermal Shock Resistance	Min 10 Cycle Min	10 Cycle	ISO 10545-9/I S 13630-5	Min 10 Cycle
Impact Resistance(COR) *	Min. 0.55	Min 0.55	ISO 10545-5/IS 13630-14	Min 0.55
Frost Resistance	As per Manufacturer	As per Manufacturer	ISO 10545-12/IS1 3630-10	Frost Proof
Crazing Resistance at 7.5 bar	4 Cycle	4 Cycle	ISO 10545-11/I S 13 630-9	4 Cycle
Chemical Propertles				
Resistance to Staining Glazed	Min. Class 3	Mic. Class 1	ISO 10545-14/IS 13630-8	Min. Class 4 / Min. Class 1
Resistance to Household Chemicals & Swimming Pool Salts Glazed	Min. Class GB	Mic. Class AA	ISO 10545-14/IS 13630-8	Min. Class GB / Min. Class AA
Resistance to Low Concentrate Acid and Alkalis Glazed	As per Manufacturer	As per Manufacturer	ISO 10545-14/IS 13630-8	Min. Class GLB*** / Min. Class A***
Resistance to High Concentrate Acid and Alkalis Glazed	As per Manufacturer	As per Manufacturer	ISO 10545-14/IS 13630-7	Min. Class GHB*** / Min. Class A***
Safety Propertles				
Skid Resistance (DCOF-WET PENDULUM) ##	As per Manufacturer	As per Manufacturer	BS 7976-2	Mat > 0.3
Lead and Cadmium release	As per Manufacturer	N.A.	ISO-10545-15	Does not yield Pb & Cd

* Tiles Intended lor use on floor
**Except Hydrofluoric Acid & it's compound
Tiles Intended for use on floor
For Floor tiles, as per customer requirement

size **198×198 mm**

CHARACTERISTIC	STANDARD AS PER ISO13006:2008 / EN14411 Gr.Bla	STANDARD AS PER ISO15622:2017 Gr.Bla	METHOD OF TESTING	SIMPOLO MEAN VALUE
Regulatory Properties * Un-Rectified (Which is Lower)				
Deviation in Length and Width	±0.30 % [± 1.00 mm)	±0.10%	ISO 10545-2/IS 13630-1	±0.40%
Deviation in Thickness	±5.0 % (± 0.50 mm)	±5.0%	ISO 10545-2/IS 13630-1	±5.0%
Straightness in Side	±0.30 % [± 0.80 mm)	±0.10%	ISO 10545-2/IS 13630-1	±0.30%
Rectangularity	±0.30 % [± 1.50 mm)	±0.10%	ISO 10545-2/IS 13630-1	±0.30%
Surface Flatness Centrai Curvature	±0.40 % (± 1.80 mm)	±0.50%	ISO 10545-2/IS 13630-1	±0.40%
Surface Flatness Edge Curvature	±0.40 % (± 1.80 mm)	±0.50%	ISO 10545-2/IS 13630-1	±0.40%
Surface Flatness Warpage	±0.40 % (± 1.80 mm)	±0.50%	ISO 10545-2/IS 13630-1	±0.40%
Surface Quality	>9 5% defects free	>9 5% defects free	ISO 10545-2/IS 13630-1	>95% defects free
Small Color Difference (For Plain Colour).	ΔE< 1.00	N.A.	ISO 10545-16	ΔE< 0.30
Structural Properties				
Water Absorption	≤0,50%	≤0,080%	ISO 10545-3/IS 13630-2 :	Ev ≤0.080%
Bulk Density	As per Manufacturer	Min 2.20 g/cc	ISO 10545-3/IS 13630-2	> 2.28 gm/cc
Massive Mechanical Properties				
Modulus of Rupture	Min. 35.0 N/mm²	Min. 35.0 N/mm²	ISO 10545-4/IS 13630-6	Min. 40.0 N/mm²
Breaking Strength Thickness ≤7.5 mm	Min 1300.0 N	Min 1300.0 N	ISO 10545-4/IS 13630-6	Min 1500.0 N
Surface Mechanical Properties				
MOH'S Hardness *	As per Manufacturer	Min.5	BS EN 15771 /IS 13630-13	Min 5
Surface Abrasion Resistance *	As per Manufacturer	Min. Class II	ISO 10545-7/I S 13630-11	Min Class II
Thermal Hygrometric Properties				
Moisture Expansion	Max 0.06% (0.6 mm/m)	Max 0.02 mm/m	ISO 10545-10 /IS 13 630-3	Nil
Thermal Expansion(COE) at 100°c	As per Manufacturer	Max. 6.0 x 10-6	ISO 10545-8/IS 13630-4	Max. 6.0 x 10-6
Thermal Shock Resistance	Min 10 Cycle Min	10 Cycle	ISO 10545-9/I S 13630-5	Min 10 Cycle
Impact Resistance(COR) *	Min. 0.55	Min 0.55	ISO 10545-5/IS 13630-14	Min 0.55
Frost Resistance	As per Manufacturer	As per Manufacturer	ISO 10545-12/IS1 3630-10	Frost Proof
Crazing Resistance at 7.5 bar	4 Cycle	4 Cycle	ISO 10545-11/I S 13 630-9	6 Cycle
Chemical Properties				
Resistance to Staining Glazed	Min. Class 3	Mic. Class 1	ISO 10545-14/IS 13630-8	Min. Class 4 / Min. Class 1
Resistance to Household Chemicals & Swimming Pool Salts Glazed	Min. Class GB	Mic. Class AA	ISO 10545-14/IS 13630-8	Min. Class GB / Min. Class AA
Resistance to Low Concentrate Acid and Alkalis Glazed	As per Manufacturer	As per Manufacturer	ISO 10545-14/IS 13630-8	Min. Class GLB*** / Min. Class A***
Resistance to High Concentrate Acid and Alkalis Glazed	As per Manufacturer	As per Manufacturer	ISO 10545-14/IS 13630-7	Min. Class GHB*** / Min. Class A***
Safety Properties				
Skid Resistance (DCOF-WET PENDULUM) ##	As per Manufacturer	As per Manufacturer	BS 7976-2	Satin / Mat ≥ P1
Lead and Cadmium release	As per Manufacturer	N.A.	ISO-10545-15	Does not yield Pb & Cd

* Whichever is lower
***Except Hydrofluoric Acid & it's compound
Tiles Intended for use on floor
For Floor tiles, as per customer requirement

Packaging

PRODUCT	SIZE	THICKNESS	TILES / BOX	COVERAGE AREA / BOX	
spectra collection	120x278 cm	6 mm	1 pc	35.90 Sq ft	3.336 Sq m
	120x240 cm	9 mm	1 pc	31.00 Sq ft	2.88 Sq m
	120x180 cm	9 mm	2 pc	46.50 Sq ft	4.32 Sq m
	120x120 cm	9 mm	2 pc	31.00 Sq ft	2.88 Sq m
	60x120 cm	8,5 mm	3 pc	23.25 Sq ft	2.16 Sq m
	20x20 cm	8,5 mm	18 pc	07.60 Sq ft	0.71 Sq m
	20x20x cm (corner)	8,5 mm	8 pc	03.38 Sq ft	0.31 Sq m
	5,8x25 cm	8,5 mm	25 pc	03.90 Sq ft	0.36 Sq m

** packing list for 20 ton cargo*

For highly aggressive cleaning caused by some common food and substances follow the table below

TYPE OF STAIN	CHEMICAL PRODUCT	Solutions
Grease	Alkaline - Solvent	Detergent
Oil	Solvent	Ammonia, Backing Soda
Ink	Oxidant - Solvent	Alcohol, Liquid Bleach, Nail Paint Remover
Rust	Acid	Hydrochloric Acid, Vinegar, Red Harpic
Lime	Acid	Descaling Reagent, Hydro Chloric Acid
Cement	Acid	Hydro Chloric Acid
Wine	Alkaline	Ammonia, Liquid Bleach
Coffee	Alkaline - Solvent	Ammonia, Liquid Bleach
Rubber	Solvent	Alcohol, Thinner
Plaster	Acid	Hydro Chloric Acid
Candle Wax	Solvent	Alcohol, Thinner
Iodine	Oxidant	Liquid Bleach
Blood	Oxidant	Liquid Bleach
Ice Cream	Alkaline	Liquid Bleach

NOTE: It is recommended that any kind of stain

Cleaning and Maintenance

Introduction

All SIMPOLO materials are easy to clean and maintain. Regular cleaning highlights the aesthetic features of the material and gives the floor an exceptional shine.

Initial Cleaning

The initial cleaning that immediately alters the flooring is of essential importance for removing all mortar, adhesives and epoxy residues that may be left in the joints. In this initial phase, we recommend using an acid product, such as DETERDEK, in a 1:5 concentration. Rub energetically to

obtain the maximum cleaning. After washing the floor, which is just as important, rinse thoroughly with plenty of water to remove all traces of the detergent used. These steps are recommended for all SIMPOLO collections.

Maintenance And Care

Thanks to the characteristics of the production process (high firing temperature, raw materials of excellent quality, sintering process, the surface of SIMPOLO material is waterproof (the water absorption is minimum). Therefore, the dirt cannot penetrate, but removing it /from the surface is necessary. For this procedure, do not use detergents containing waxes or waxing products to avoid the looming of greasy

layers; for choosing the most appropriate detergent, refer to the following chapters. After installing floors, particularly those made with polished materials, the surfaces should be adequately protected with particle board or other suitable materials to protect them /from dirt and onsite processing. This prevents damage caused by subsequent processing.

General Recommendations

For commercial and heavily used surface areas such as airports, hospitals, supermarkets, and any public spaces with heavy foot traffic which is thus subject to considerable soiling, it is necessary to use automatic cleaning machines with suction of the washing liquids. This allows not only deep cleaning, but also, the continuous removal of liquids containing substances that cause soiling, thus preventing the formation of films which are very difficult to remove. Any detergent on the market can be used in the desired concentration for cleaning the high

technology sintered SIMPOLO products, with the exception of HYDROFLUORIC acid (HF) or its compounds, according to UNI-EN 176 standards. In order to keep costs limited and speed up maintenance operations, the concentration of the detergent must always be as low as possible. For raised floors we suggest choosing bright or polished surfaces in large sizes: these materials can be dry cleaned or with the minimum use of liquids. After the floor is laid, it is necessary to make a very accurate initial cleaning with proper products.

Matt Materials

For these materials, after completing the steps described in the section "initial Cleaning", you only need to clean the floor with hot water containing small quantities of an alkaline detergent such as FILA CLEANER in a concentration of 1:200. On these

types of surfaces, it is not advisable to apply a waterproofing product: the absence of porosity causes the waterproofing agent to deposit on the surface unevenly and to have unpleasant aesthetic effects.

Installation Suggestions

Traditional Floor Laying

Laying SIMPOLO SCS requires similar laying conditions to those required for traditional formats. Requires the adhesive to be applied both on the setting bed and on the back of the tile.

SIMPOLO Tiles for flooring require the following conditions:

- A flat surface;
- Clean and free from dust, scraps and any lumps of cement;
- The setting bed must be uniform and have already undergone the drying shrinkage process;
- Repair of any cracks;
- Any uneven parts on the surface must be filled with suitable levelling compounds.

INSTRUMENTS REQUIRED

- Cement-based powder adhesive for the full spread
- 3x3mm square toothed trowel and 15mm round toothed trowel;
- Frame with suction cups for handling or double suction cups;
- Non-bounce plastic mallet 170x370mm;
- Levelling system: base clip + wedge + pliers.

Processing stages

BONDING TO THE FLOOR

- 1) Ensure that the surface to be covered is solid, flat and free from dust and oil/grease.
- 2) Use the adhesives described above mixed according to the specifications indicated in the technical data sheet of the chosen adhesive.
- 3) Spread the adhesive onto the surface to be covered with a 15mm round toothed trowel across an area of 5/10 cm more than the dimensions of the Tile.
- 4) With the tile in a vertical position on the handling frame, spread the adhesive onto the back of the slab with a 3x3mm square toothed trowel.
- 5) Using the frame with suction cups, bring the tile into a horizontal position and lay it.
- 6) To guarantee uniform bonding of the slab, the special 170x370mm non-bounce plastic mallet must be used, topping from the middle towards the edges to remove any air pockets between the back of the tile, the adhesive and the surface to be tiled.
- 7) Using the levelling system..

LEVELLING SYSTEM

The levelling system aims to guarantee perfectly levelled floors simply and quickly, eliminating any unevenness between the tiles. The levelling system is strongly recommended for laying SIMPOLO Tiles.

instruments required

- Base clip;
- Wedge;
- Adjustable pliers for installing floors/wall tiles.

Application of the levelling system

Positioning the base clip:

- a) After spreading the adhesive, and insert the base clip below the SIMPOLO tile on the four sides.
- b) Depending on the format of the tile, position one or more supports for each side of the tile.
- c) Positioning the tile.

Inserting the wedge:

- a) Insert the wedge in the support slot, Taking care not to exceed the breaking point.
- b) To make inserting the wedge easier, it is recommended to use the adjustable pliers.

Removing the support!:

- a) Once the adhesive has dried, the protruding part of the support can be separated from the base clip by topping with your foot in line with the joint.

GENERAL ADVICE FOR GROUTING

Pay attention while choosing joint sealants: check the technical sheets, choose them shade matched and follow carefully the recommended cleaning times, as many new-generation coloured sealants contain pigments and additives that can be very strong. For polished/glossy surfaces, do not use epoxy grouts or synthetic-based flexible mortars (Flexlughe), and do not add additives/latexes to the grout, as they make the removal of residues with standard detergents very difficult. However, should you decide to use them, it is recommended to make a previous test off-site.



Simpolo Vitrified Private Limited

Old Ghuntu Road, MORBI - 363 642. Gujarat, INDIA
Tele.: +91 2822 241622, E-mail: customercare@simpolo.net

MUMBAI

Simpolo Gallery, Unit No.: 203, 2nd Floor, Morya Land Mark 2, Link Road, Andheri (W), Mumbai - 400 053.
Tele.: +91 22 40167131, E-mail: mumbai@simpolo.net

AHMEDABAD

First Floor, 103, Sumel - 2, Near Gurudwara, S. G. Highway, Bodakdev, Ahmedabad - 380 054.
Tele.: +91 79 400 37222, +91 79 400 52220, E-mail: ahmedabad@simpolo.net

DELHI

H-139, First Floor, Sector-63, Noida - 201 301, Uttar Pradesh.
Mob.: +91 93103 90046, E-mail: delhi@simpolo.net

COCHIN

33/2380 A-A1 NH Bypass, Vysali Bus Stop, Chakkaraparambu, Cochin - 682 032.
Mob.: +91 93493 39938, Fax: +91 4844 037118, E-mail: cochin@simpolo.net

KOLKATA

5th Floor, DD-27, Salt Lake City, Sector 1, Near Salt Lake City Center, Kolkata - 700 064. (W.B.)
Mob.: +91 90733 53728, E-mail: kolkata@simpolo.net

CHENNAI

Prashant Gold Tower, 5th Floor, 39-North Usman Road, T'Nagar, Chennai - 600 017, Tamilnadu.
Mob.: +91 74348 51080, E-mail: chennai@simpolo.net

LUCKNOW

Aditya Tower, 1st Floor, Cp-8 Vijyant Khand, Gomati Nagar, Lucknow - 226 010.
Mob.: +91 97252 79749, E-Mail: Lucknow@Simpolo.net